



Energy for
generations



Craigneil Wind Farm

Update to Stonehaven & District Community Council
14th January 2020

Brian Hegarty
Renewables Project Director

Contents



- Introduction to ESB
 - Who we are
 - The Journey Ahead
- ESB's Generation Assets
- ESB's Wind Development portfolio in Scotland
- Craigneil
- Q & A

ESB – the beginning



DIGGING 4,000 TONS A DAY

Such is the steady performance of one of the giant excavators on the Shannon Works.

This single piece of electric driven machinery does the back-breaking work of hundreds of men.

For centuries the world has wasted its vast precious possessions - human lives - to labour that electricity can do.

Even to-day in our country, on the farms, in the home, and in the factory, men and women are toiling out their lives doing the work electricity should do.

The Shannon is being harnessed to lighten human toils, to brighten human lives.

THE ELECTRICITY SUPPLY BOARD



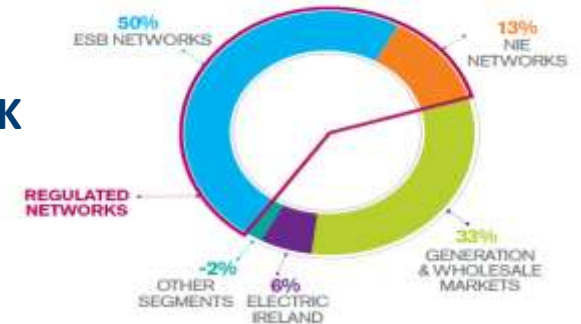
**ESB Advertisement
1928**

Who We Are?



- ❑ Established in 1927, Vertically Integrated Utility
- ❑ 95% Government Owned with core Markets, Ire and UK
- ❑ 2018 EBITA - €1.2bn

2016 EBITDA BY BUSINESS - €1.3BN



- ❑ Owner of ROI T&D Networks (RAB - €7.4bn)
- ❑ Owner of NI T&D Networks (RAB - €1.6bn)



- ❑ 1.4m Customers
- ❑ 40% Market Share



Generation & Trading

- ❑ Capacity – 5.8GW
- ❑ All-Islands Capacity – 4.4GW and 45% Market Share
- ❑ GB Capacity – 1.4GW
- ❑ Contains ESB's Investment Arm – Asset Development



Engineering & Major Projects

- ❑ ESB's Engineering Arm
- ❑ SIRO/e-Cars/Innovation Unit

Decarbonise electricity and electrify heat and transport



Low carbon generation



Smart Reliable Networks



Empowered, informed customers



Electric heating and transport

ESB Generation Assets

- Wind Farms**
 
- Thermal Stations**
 
- Hydro Stations**
 
- Pumped Storage**
 
- Biomass**
 



Site Name	Capacity (MW)	Turbines	Year Commissioned
Crockahenny	5.0	10	1998
Eglish	15.0	6	2017
Carrickatane	20.7	9	2013
Curryfree	15.0	6	2011
Hunter's Hill	20.0	8	2010
Crockagarron	17.5	7	2010
Crockdun	12.5	5	2017
Mountain Lodge	31.5	21	2008
Tullynahaw	22.0	11	2010
Garvagh Glebe	26.0	13	2010
Carrane Hill	3.4	4	2006
Black Banks	10.2	12	2001 & 2005
Derrybrien	59.5	70	2006
Grouselodge	15.0	6	2010
Mount Eagle	6.8	8	2005 & 2009
Woodhouse	20.0	8	2015
Carnsore	11.9	14	Sep-02
Raheenleagh	35.2	11	2016
Betws	34.5	15	2013
Fullbrook	66.0	22	2011
West Durham	24.0	12	2009
Cappawhite	52.0	17	2017
Oweninny	89.0	29	2019
Castlepook	33.3	14	2018
Moneypoint	17.3	5	2017
Grousemount	114.0	38	2019
Galloper	44.1	1/8 of 56	2018
TOTAL	821.4		

Offshore Wind



Scottish Development pipeline – Onshore Wind



Currently developing a portfolio of c.1350MW

Projects are at a range of stages:

- Planning consented (150MW)
- Planning submitted (300MW)
- Planning in preparation (270MW)
- Pre-planning (650MW)

Craigneil Wind Farm

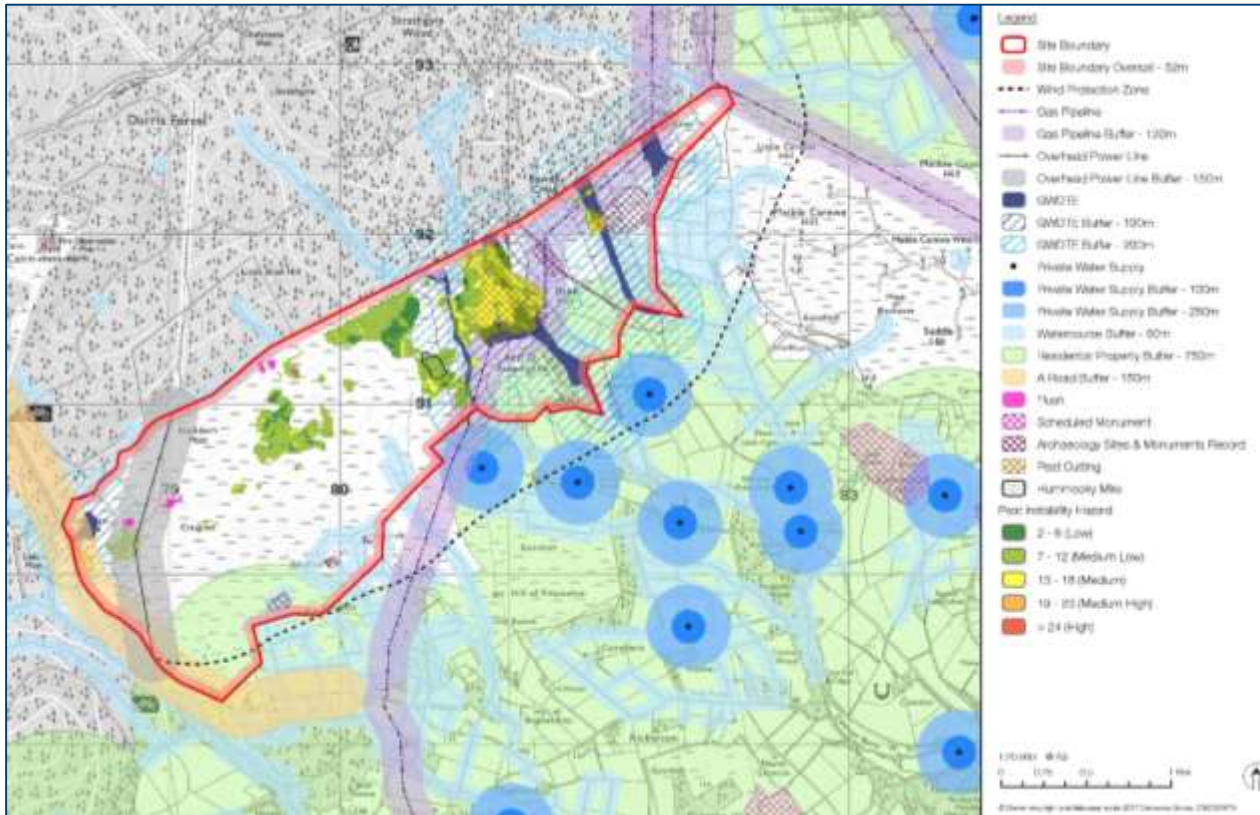
www.craigneilwindfarm.co.uk

Site location



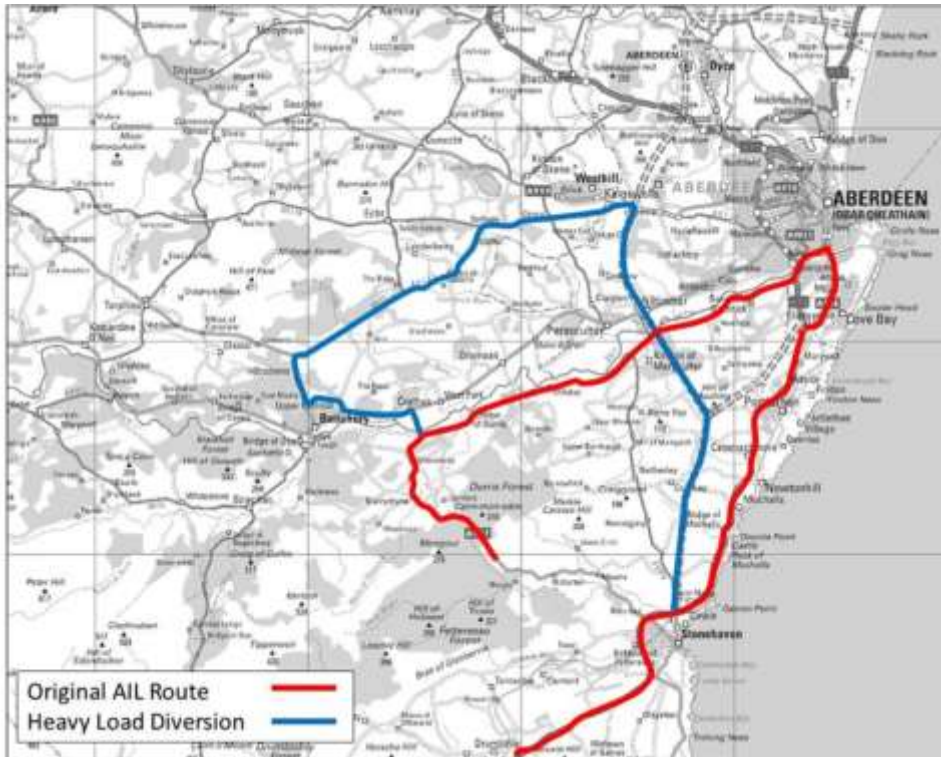
- The site is near Rickarton, approximately 6.5km to the north west of Stonehaven
- Forestry Commission plantation lies to the south, west and north
- Meikle Carewe wind farm is to the east

Site optimisation



The Environmental Impact Assessment process was used to optimise and confirm the site layout

Turbine delivery route



- Now two possible routes as ES Addendum confirms an alternative turbine delivery route utilising the recently completed Aberdeen Western Peripheral Route

Planning status

- Submitted/Registered: 8th May 2018
- ES Addendum submitted 13th March 2019 – provided details of alternative turbine delivery route option and the habitat management plan
- Currently an unresolved MOD objection – potential impact on air defence radar at Buchan
- ESB in discussions with MOD for an agreed form of mitigation
- Likely committee date: Kincardine and Mearns Area Committee in the coming months

Development timeline / Construction matters

- Grid connection date – October 2024
- Construction period – c.18-24 months (weather dependent!)
- General construction working hours proposed 07:00-19:00 Mon-Sat
- Abnormal load turbine deliveries will be agreed in advance with Aberdeenshire Council, Transport Scotland and the police – avoiding peak traffic periods
- A Construction Environment Management Plan (CEMP) will control activities on-site and ensure the protection of the environment, particularly in terms of ecology, hydrology and hydrogeology
- The precise details of the CEMP will be controlled by planning condition and therefore agreed with Aberdeenshire Council, the Scottish Environment Protection Agency and Scottish Natural Heritage

Community Fund



- £5,000 per MW, which could mean £176,000 per annum for the lifetime of the project (assuming a 35.2MW wind farm capacity). Permission is being sought for 30 years
- Opportunity to bring forward/capitalise community benefit fund for larger projects
- Committed to 'Meet the Developer' events if project is consented to outline the supply and construction opportunities
- Previously taken a stand at the Feein' Market, donated to Stonehaven Christmas Lights 2018 and Fireballs 2019

Thank you

Brian Hegarty

07980567980

brian.hegarty2@esb.ie

www.craigneilwindfarm.co.uk

Sam McMillan

07779650514

sam.mcmillan@mcmillan.scot

www.mcmillan.scot